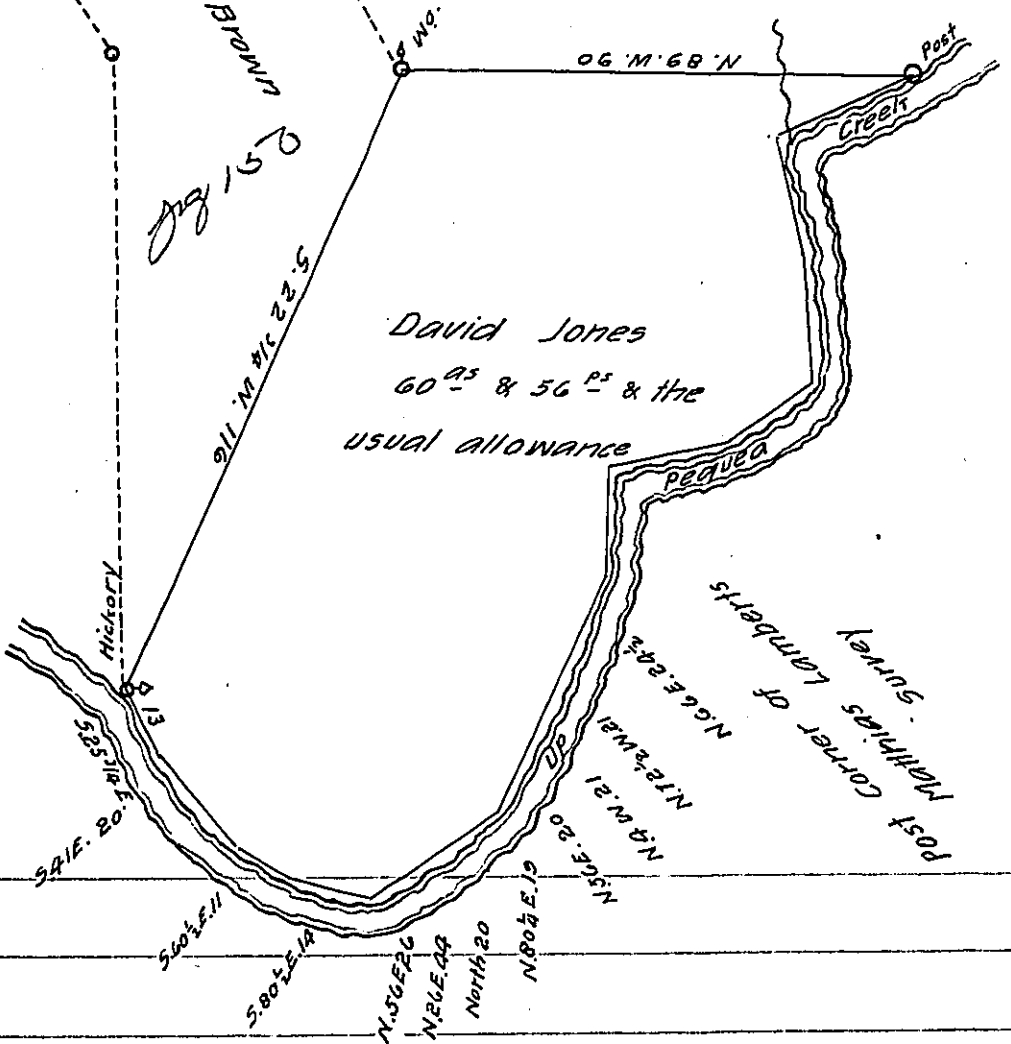


FORM No. 1.

Frederick Shoff & Matthew Brown

pg. 151  
Matthew Lambert



A Draught of a Tract of Land Situate in Conestogoe  
 Township Lancaster County Containing sixty acres and fifty six perches  
 and the usual allowance of six p. Cent for Roads. Surveyed for  
 Robert Coleman & the Executors of Edward Brien dec'd in pursu-  
 ance of a Warrant dated the 10<sup>th</sup> day of January 1759, grant-  
 ed to David Jones &c. May 17<sup>th</sup> 1817.

To Samuel Cochran Esq<sup>r</sup> pr. Jacob Hibshman D.S.  
 Surveyor General

I approve of the above survey to be accepted in the Surveyor  
 Generals Office January 3<sup>d</sup> 1823. Rob<sup>t</sup>. King, Jr., D.S.

IN TESTIMONY that the above is a copy of the original remaining on file in  
 the Department of Internal Affairs of Pennsylvania, made  
 conformably to an Act of Assembly approved the 16th day of  
 February, 1833, I have hereunto set my Hand and caused  
 the Seal of said Department to be affixed at Harrisburg,  
 this thirtieth day of October 1905

*Samuel P. Brown*  
 Secretary of Internal Affairs.